
MARCH 2002

HI All

I am loathe to write to you again after severely ruffling the feathers of the Poultry Industry Association of New Zealand (of course the pun was fully intended). I must apologise to the Poultry Industry Association for my editorial comment in the October issue and please read the letter to the editor from Michael Brooks. Our president writes so eloquently and it was his piece that gave me the stimulus to write what I was writing. Our Vice president suggested I should say I was setting you up for a "This is how things can go bad if you write without the facts." I am not eloquent, I am just a hick Australian with passion and a pen. What I was trying to do was set up a 'what if' situation which was cut short by the need to get the Newsletter out and became "When editors go bad!"

The question I was trying to go about posing was what if there was only one egg supplier and failed dismally. Apparently there are 170. So what if there were only three major poultry meat suppliers, they have complete responsibility for the kgs of chicken you eat. What if there was only one conglomerate that laundered all our milk products. What if there were only three or four major lamb processors. It is all in the name of making things cheaper and cheaper and cheaper for the consumer.

Now who is this pig ignorant git we call the consumer, who gave them the big stick. They are the great unwashed who know sod all about the stuff that they buy, until all of a sudden they discover something distasteful like tail-docking (cows, pigs or sheep - so I don't have to name an industry). So along come the new right consumers who want good welfare, traceback, quality assurance, food safety and free range produce so they can take it all home wropped in separate sanitary plastic bags that they throw out in the rubbish for seagulls to strangle in! That my friends is you and I. I challenge you to go home and audit everything you eat and see if you know where every ingredient came from. Save all the wrappers off everything you buy for a month and stack them in your garage where the microbes can get at them, multiply that by 3 million to see what a monthly stink this ignorant git consumer is imposing on Aotearoa - land of the long white refuse pit.

Oh for the days when the fish and chip shop, the butcher, the baker, the candlestick maker, the milkman, flower man, vege man and thief gave you everything wrapped in good old renewable resource, compostable paper. (Okay Okay - scratch the milkman and thief) Or is my memory failing me and was that a bleached, heavy-metal containing, rain-forest destroying mega pollutant too?

The **62nd Conference** of the Society to shaping up to be a great conference. Seventy five abstracts were received for the conference which is being held in Palmerston North, from **Monday 24th to Thursday 26th June**. The local organising committee, headed by Annette Litherland, have lined up some exciting contract sessions and social events. The details and registration forms are contained in this newsletter on the BLUE form to the conference organisers. **Membership subscriptions are due now** so send them in on the YELLOW form to the Executive secretary (not the conference).

See you at the conference!

Scobie

The opinions expressed in this Newsletter are those of the author and not necessarily those of the NZSAP.

LETTERS TO THE EDITOR

Dear Sir,

The Perspective written by Mr. David Scobie in the October 2001 NZSAP Newsletter was astonishing reading in a publication concerned with New Zealand animal production.

The astonishment arises from the almost total lack of knowledge of the poultry meat production and egg laying industries in New Zealand that is demonstrated. I set out below a series of facts about the two industries that will make informative reading when compared with the mish mash of incorrect data and curious comments in Mr. Scobies piece.

There are approximately 170 egg producers in New Zealand so the day of a sole producer referred to in the article is some way off. There are 2.7 million layer hens in New Zealand laying on average 302 eggs per year. New Zealanders consume on average 208 eggs per capita per annum so not quite one a day but more than one every two days. The figure of 208 per capita per annum translates to 68,000,000 dozen eggs i.e. 816,000,000 eggs.

You are correct that the chicken meat industry is extremely competitive thereby ensuring that the consumer gets a very cost effective product. The period June 1997 to June 2001 has seen the consumer price index for beef increase 41%; lamb increase 35%; fish increase 20% and pork increase 13%. Chicken by comparison has increased by 0.9% (MAF data). N.Z. consumers now buy more chicken per head i.e. 30.4 kg per capita per annum than any other meat, having passed beef as the preferred meat in 2000.

You are wrong again in your comment that there are only two poultry meat processors in New Zealand. There are actually fourteen poultry meat processors in New Zealand. "Old Laying Hens" are not the useless product you refer to and are used in further processed product.

I was particularly stunned by your reference to the concept of grinding up poultry meat and feeding it to chickens. The ongoing controversy over BSE and the feeding of animal products to animals has probably been the most controversial issue in animal production in recent history. The feeding of chicken meal to chickens was banned voluntarily by the Poultry Industry in New Zealand several years ago despite there being no scientific proof that this is a threat to human health.

You also refer to the prospect of importation of Australian eggs into the New Zealand market. The New Zealand poultry flock is noted for its unique and superior health status in comparison to other poultry industries around the world, including Australia. The three major poultry diseases i.e. Avian Influenza, Newcastle Disease and Infectious Bursal Disease are not present in New Zealand. Therefore, in order to ensure these exotic diseases do not affect our poultry flock and indeed our native fauna, there are strict quarantine regulations preventing the importation of any fresh or frozen poultry, commercial eggs or cooked product sourced from non-IBD free sources.

The likelihood of the humble New Zealand laying hen joining the moa I would suggest is therefore remote.

Yours sincerely

Michael Brooks

Executive Director PIANZ

The impact of the word "impact"

Dear Scobie

If you're going to try to raise the standard of English used by Members, refuse to accept "impact" when it is used as a verb (see September Newsletter, p 5, Animal Science Award Report, 4th line from the end "...does impact directly on human health."). There is certainly a noun "impact" but there is no such verb; what the writer means is "affect", and that is the verb that should be used.

Hildred Carlisle

Just to provide some balance I did receive one other letter to the editor which said "Great newsletter" went on to compliment the Presidents comments and said. "I loved the newsletters - made me laugh." You can please some of the people some of the time. – Ed

PRESIDENTIAL COMMENT

Pythagoreans once believed that maleness was associated with heavenly and the immaterial, and that femaleness was the earthly and the material. The study of mathematics was thus seen to be the study of the transcendent realm of the number gods, and was supposedly the male element of the human being, the psyche. This association of mathematics with maleness has had a profound impact on Western culture, the belief that men's minds are innately more suited to mathematics than women's is still widespread. In fact, male scientists may be more male than scientist, subjecting nature to a typically masculine-like drive of control and exploitation. The largely feminine-like qualities of sensitivity, gentleness, warmth, compassion and intuition tend to have been excluded. The development of science has also had consequences for our spirituality. Mathematical and physical descriptions of the celestial heavens left little room for the mind, the spirit or the soul. Interestingly, this is a feature of Western society - other cultures having placed their spirituality not in the starry heavens, but in their dreams, mythical past or genealogy.

What we believe determines how we act and a belief in science helps us to understand and manipulate the world. Beliefs are powerful in determining society's perceptions, but we need to acknowledge that they may or may not be informing us correctly. Not surprisingly, much effort is devoted to shaping our beliefs. For instance, David Fraser (University of British Columbia) has noted that opponents and defenders of animal agriculture advocate a number of themes including:

- modern farming is detrimental (beneficial) to animal welfare;
- farming is controlled by large businesses (families and individuals);
- it is motivated by profit (traditional values that lead to profit);
- modern farming methods increase (alleviate) world hunger;
- food produced is unhealthy (safe and nutritious); and
- production is harmful (not harmful and often beneficial) to the environment.

The control over the symbolism of things like modern agriculture and biotechnology is essentially about control of the language we use. One of the signs of a healthy civilization is the use of a relatively clear language that everyone can use. Invoking the popular myth of age being synonymous with wisdom, several years ago Mac Hanna made a plea for us to communicate with clarity and brevity. The increasing specialization of science admittedly makes this difficult, but communication fails when language is obscure and complex.

Thanks to Annette Litherland and her enthusiastic local organising team, our 2002 conference has several more than the usual number of contract sessions. They provide an opportunity for us to think beyond the confines of our disciplines, something that the demands on personal workloads mean few of us regularly take. Use these opportunities to communicate, to challenge your thinking, and to reflect on the way we see the world.

Mark Fisher

"DOCTOR OF GRASS" RECEIVES A PROMOTION

A further honour is about to be bestowed on Mr Mac Hanna, who last year was elected a life member of the NZ Society of Animal Production. A number of scientist associates of Mac from various disciplines submitted recommendations to the University of Waikato to recognise the large contribution Mac had made over the years in stimulating scientists to look at some important issues. His contribution was more than just the collection of data as he was for ever asking the deep and fundamental questions. The great news is that the university council has agreed to award an Honorary Doctor of Science to Mac, and this will be conferred during the official ceremonies in the week 19-26 April. Several years ago some colleagues informally awarded Mac a "Doctor of Grass", but this time it is the real thing and I'm sure many members will join us in congratulating Mac on this wonderful achievement.

George Davis

BRITISH SOCIETY OF ANIMAL PRODUCTION

Geoff Jones is having a 'tidy-up' and wants to dispose of his collection of proceedings of the British Society of Animal Production. He has all but about 6 of all Proceedings from 1978 - 1992, free to a good home. Delivery possible in the Waikato. Someone in NZSAP might know of a suitable home. His address is: Geoff Jones c/- AnchorMart, Lipsey St, Te Aroha 2971, New Zealand Geoff.P.Jones@xtra.co.nz

WHAT IS MODELLING?

Modelling is a way of simplifying the real world to enable us to solve problems. We do it all the time and so easily that we don't even notice we are doing it. For example, a street directory is a model of a city's roads, a diagram is a model of how something is made, and even a calendar is a model of a month. People use these models to solve problems, such as 'What is the shortest route?', 'How do I put this together?', 'How long until my birthday?'.

What makes a good model?

The aim of a model is to simplify the problem. Using a street directory to find your way around a city is much easier than using trial and error or just heading off in one direction. However you usually have to reach a balance between simplicity and accuracy. Seasons give us a simple model for general weather patterns – hot or cold, wet or dry, but may not be accurate on any particular day. Good models must include the most significant factors and describe the most important features of a problem but may omit factors of minor importance. You would expect that temperature measurements might be important for a weather model, but ice-cream prices might not. Finally, a good model must be accurate enough to make predictions. The weather model should tell you if it will rain or not, but if it predicts warm sunshine and it snows instead, then the model should be checked.

How does modelling work?

Modelling is a five-step process. Imagine that you have been asked to organise a conference for NZSAP. Your problem is to decide how much to charge each person to cover all the costs.

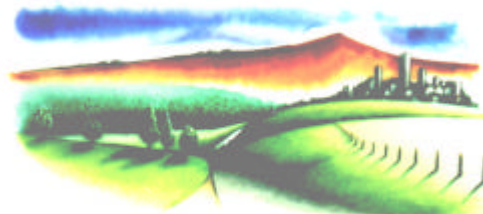
- Step 1. Get a clear picture of the problem. Decide what has to be paid for at the conference.
- Step 2. Choose the most appropriate mathematics to solve the problem and then present it in mathematical language. In this case you would choose estimation, addition and division.
- Step 3. Solve the mathematical problem. Estimate how much a typical person would eat and drink, the proceedings and lecture theatres etc. and work out the cost per person
- Step 4. Translate your answer back into the language of the original problem. The amount, in dollars, you would need to charge each person.
- Step 5. Check the solution your mathematics has produced. Is it a good enough answer for your needs? The amount you charge each person should be affordable and comparable with charges for similar conferences.

In more complex problems it is usually Steps 1 and 2 which require most attention and cooperation between the problem posers and modellers. A system has inputs and outputs, and a model tries to simplify the interactions between inputs to give biologically meaningful outputs. There are many ways of making models – the true skill is in selecting the right approach for your particular problem.

Ken Louie

To help the less enlightened members of the Society, we asked Ken Louie to explain modelling. It seems that many modelling papers have become obsessed with Steps 1, 2 and 3 above and don't get back to 4 and 5. Sam Peterson is frequently in receipt of modelling papers for the conference Proceedings, and has come up with "Additional Instructions for Referees" Sam wants to see evidence that the model has been tested.

The Society is grateful for the sponsorship provided by



Landcorp
LANDCORP FARMING LIMITED

NZSAP ANNUAL CONFERENCE 2002

The 62nd Annual conference of the New Zealand Society of Animal Production will be held at Massey University from Monday 24th to Wednesday 26th June 2002. The organisation for the Conference is now well underway. There are a larger number of longer papers in this year's conference with a number of concurrent sessions. There are a number of contract sessions with ample opportunity for learning, updating and discussion.

First thing on Monday we hear from our president, closely followed by presentations by four young members. Later there is an exciting dairy contract titled "From farm to market". This contract has a number of topics including genetics for improved milk value, udder health, modifying milk fat to improve its spreadability and the relationship between beta-casein A1 and heart disease. There are an additional 12 dairy production papers on the Monday. For those not interested in dairy production, Monday has 17 presentations on wool, internal parasites, beef and deer production. The annual general meeting will be held on the Monday at the end of the day. This is the time to air any changes you would like to make in the Society.

On Tuesday many of the papers are associated with nutrition. There is a feature contract examining high-energy forages and total mixed rations. Another contract examines the environmental issues like green house gases and carbon taxing. Also at this session there will be a group of secondary school students interested in biological sciences as a career. During Tuesday there are an additional 17 papers on sheep and dairy nutrition. The day is rounded out with a good session on genetics.

On Wednesday the theme is Animal Health and Welfare. There are contract sessions examining Johne's disease and minerals and trace elements. There is a strong contract session on Animal Welfare and Ethics, commencing with the LIC lecture by John McInerney. Animal welfare is a continuing issue that affects research, farming practises and our markets and there are also 7 contributed papers on animal health and welfare.

The annual dinner and presentations of awards will be held on the Monday night at the Awapuni racecourse (buses will be provided). On Tuesday there will be a "Mingle and Meet" dinner (a must for old and new animal scientists) with the New Zealand Institute of Agricultural Science at Whararata. We are working on providing some pleasant music at both dinners. Accommodation has been booked in the University hostels. Alternatively there are also a wide variety of motels within walking distance of the University. The organising committee looks forward to seeing you at the conference.

See you there.

Annette Litherland (06 351 8204) or annette.litherland@agresearch.co.nz.

The Programme Committee received 78 abstracts, 6 were subsequently withdrawn and 57 manuscripts had been received for review by early March. Submitted manuscripts are currently being peer reviewed (reviewers - please return comments to Sam Peterson by 18th March) and the deadline for the receipt of the revised paper is 12th April to ensure the proceedings are available at the conference. Refereed contract papers should be submitted by 3rd April. Before submitting final documents, authors should consult the document "Format for Electronic transfer of papers presented at NZSAP meetings" (sent to corresponding authors and available on the website). In the case of unavoidable withdrawal of a paper, the author must advise the Secretary in writing at the earliest possible date.

Sam Peterson

REMEMBER	18 March	Referees comments to Editor
	12 April	Revised manuscripts to Editor
	19 April	Nominations for Committee to Exec. Secretary
	31 May	Conference Registration to Andrea Death
	24-26 June	62nd Annual Conference in Palmerston North
	31 July	Animal Science Award applications to Exec. Sec.

Programme Outline

	Mon 24 th	Tues 25 th	Wed 26 th
Morning	Presidents address Young members	Sheep nutrition OR Genetics	Johnes disease
	Dairy production OR Wool and parasites in sheep	Environmental issues	Trace elements
Afternoon	Dairy farm to market	Dairy nutrition	LIC lecture Pain, analgesia and animal welfare
	Beef and Deer OR Dairy production AGM start 5.15	High energy forages and total mixed rations	Animal health and Welfare
Evening	Annual Dinner	Meet and Mingle with NZIAS	

MINUTES OF THE ANNUAL GENERAL MEETING OF NZSAP 25 JUNE 2001

Held in Lecture Room L4, Lincoln University
President (Graham Barrell) declared meeting open 2:10 pm.

ATTENDANCE

Forty seven members in attendance. Minute Secretary Roland Sumner.

1. APOLOGIES
Neville Jopson.

Moved Peterson/ Shackell. Carried.

2. That the 2000 AGM Minutes be signed as a true and accurate record of that meeting.

Moved Smith/ Scobie. Carried.

3. MATTERS ARISING
None.

4. PRESIDENTS REPORT

Key points.

- Current membership 531 – 17 more than last year. Increasing proportion falling behind in renewing their subscription.
- Members were again supported to attend and officially represent the Society at two overseas congresses. The 9th Congress of the Asian-Australasian Association of Animal Production Societies (AAAP) in Sydney (combined with 23rd Biennial Conference of the Australian Society of Animal Production and the 17th Annual Symposium of the Dairy Research Foundation) and the International Congress of Animal Production (ICAR) in Stockholm. The New Zealand Society of Animal Production contributed two invited contracts at the AAAP Congress – “Deer feeding and management” convened by Ken Drew and “Genetic improvement and reproductive control of farmed red deer and wapiti” convened by Geoff Asher.
- No new Occasional Publications were printed this year.
- Awards
 - 2000 NZSAP Young members Award – Ian Tarbotton.
 - 2000 NZSAP Innovation Award (Science and Technology) - CJ Morrow, ES Kolver, GA Verkerk and LR Matthews for their paper entitled “Urinary corticosteroids: an indicator of stress in dairy cows”.
 - 2001 NZSAP Jubilee University Awards Teresa Soppet (Massey) and Mark Stevenson (Lincoln). Mac Hanna elected as a Life Member.
 - 2001 McMeekan Memorial Award – Tom Broad and Allan Crawford.
 - 2001 Sir Arthur Ward Award – No award.
 - 2001 Lincoln University Centennial Award – Andrew and Anna Taylor, West Melton.
 - 2001 LIC Lecture presented by Assoc. Prof. Matt Lucy, University of Missouri, USA.
- Mark Fisher has been reappointed for another 3-year term on the National Animal Welfare Advisory Committee.
- Review of steps undertaken during the year in meeting the objects of the Society.
- Thanks to members of the Management Committee and the Organising Committee of the 61st Society Conference for their work during the year.
- Feature of 2001 Conference a conjoint session with the South Island Dairy Event (SIDE) that will include the LIC Lecture.
- List of 2001 Conference sponsors tabled.

5. TREASURER'S REPORT

Presented.

That the annual financial report as circulated be accepted as a true and accurate record of the Society's accounts.

Moved Smith/ Barrell. Carried.

Planned reduction of \$13,000 in total accumulated funds through allocation of additional award monies to align with the Society's taxation status as a non-profit organisation. Reprinting of copies of Occasional Publications that are currently in short supply will restore the equity during the ensuing year.

That the subscription for 2002 to remain the same as for 2001 at \$55.00 (GST incl.) for Full members, \$27.50 (GST incl.) for Student and Retired members and US\$55.00 for Overseas members (outside New Zealand and Australia).

Moved Smith/ Barrell. Carried.

That KPMG be re-appointed as auditors for the Society accounts.

Moved Barrell/ Tervit. Carried.

6. EDITOR'S REPORT

Key points.

- Seventy papers published in the Proceedings.
- Thanks to those who acted as referees.
- Two referees were assigned to each paper – one senior and one junior.
- Request for referees to focus more on scientific merit of papers.
- Information for Authors, Manuscript Submission and Copyright forms all placed on the web site this year to assist authors.

That Editor's report be received.

Moved Peterson/ Bray. Carried.

7. NEWSLETTER MANAGER'S REPORT

Key points.

- Three Newsletters published.
 - Contributions welcome.
- That Newsletter Manager's report be received.

Moved Morrow/ Smith. Carried.

8. WEB SITE MANAGER'S REPORT

No verbal report presented as web site manager unable to be present.

9. ELECTION OF OFFICERS

Nominations received for positions of:-

President	M W Fisher
Vice President	C J Morrow
Secretary	R M W Sumner
Treasurer	J F Smith
Editor of the Proceedings	S W Peterson
Newsletter Manager	D R Scobie
Web Site Manager	N B Jopson
Publications Manager	G A Verkerk
Chairman Conference Committee	A J Litherland

There being only one nomination for each position the nominated persons were declared elected.

Moved Barrell/ Shackell. Carried.

10. GENERAL BUSINESS

- Change in constitution.

That paragraph 7 of Rule 6 in the Society's rules be deleted and replaced with the words:-

The Management Committee may co-opt onto the Committee, no more than two members of the Society to develop experience in management of the Society's affairs or to carry out specific tasks on behalf of the Society until the next AGM. Any member co-opted to the Management Committee of the NZSAP may have speaking and voting rights on any motion before that Committee."

Moved Barrell/ Fisher. Carried.

- Lapse in subscription renewals.

99 members (19%) owe more than one year's subscription. Discussion appropriate ways to encourage members to remain financial. Members see NZSAP having an expanding role in evaluating scientific information for transfer to farmers via various publications. To achieve this NZSAP needs to interact more with other rurally focussed science and technology groups. This may involve being proactive in joining with other science and technology groups, under an appropriate umbrella group, for political lobbying to arrest the reduction in funding of primary industry research.

- Primary Resources Advisory Committee of the Royal Society of New Zealand.

A recently formed committee, chaired by Jacqueline Rowarth, has been established to provide a pressure-group with direct communication to members of Parliament and relevant ministries. NZSAP has been represented at the single meeting held this year.

- Seconding new member's application forms.

Many membership application forms are currently returned without a Proposer's and/or Seconder's signature. In these cases members of the Management Committee complete the Application Form. Members requested more rigour in the system with the prospective member submitting a short *curriculum vitae* with their application, if they are unable to obtain the signature of two members known to them to vouch for them. Incoming Committee to revise the Application Form accordingly.

- Cost of the Society CD-ROM containing the Proceedings to New Zealand University Libraries. Both Massey and Lincoln libraries have declined purchasing copies of the Society CD-ROM containing the Proceedings at the current listed price of \$600 for an initial disc and \$45 for each "update" disc, as they consider the cost unjustified. Alastair Nicol requested the incoming Management Committee review the cost to these two institutions to attract new student members.

Meeting adjourned 3:05 pm and reconvened at Rossendale Estate, Tai Tapu at 5:00pm.

11. LIFE MEMBERSHIP

Oration in support of nomination of Michael McRae Hanna for Life Membership presented by George Davis. Seconded by John Smith.

Carried by acclamation.

Meeting closed 5:15pm.

2002 AGM AGENDA

The 62nd Annual General Meeting of the New Zealand Society of Animal Production Inc. will be held at 5:15pm. In the AgHort lecture theatres, Massey University Palmerston North on Monday 24 June 2002.

Agenda

- Apologies
- Minutes from 2001 meeting
- Matters arising
- Presidential report
- Treasurer's report
- Editor's report
- Election of officers
- General business

Signed: Executive Secretary

NZSAP INNOVATION AWARD (SCIENCE AND TECHNOLOGY)

The NZSAP Innovation Award recognises the paper presented at the annual conference which in the view of the judging panel represents the greatest advance in science and/or technology for animal production. All papers presented at the annual conference are eligible for the Award.

NZSAP AWARD APPLICATIONS

The Animal Science Award is to promote and advance Animal Science and Production. Specifically it encourages early career development and supports contact with AAAP activities. Applicants must normally have been a member of NZSAP for at least one year prior to application and be a current financial member. Applications should be sent to the Executive Secretary by **31 July 2002** for consideration by the Management Committee in August/September 2002. The application format is available from the Executive Secretary and on the NZSAP website <http://nzsap.rsnz.govt.nz>

ANIMAL SCIENCE AWARD REPORT

As part of my Animal Science award, I visited Dr Hasselgrens group based at the University of Cincinnati Medical School. Their work in the sepsis area was of particular interest to me. Currently, they are assessing the role of enzyme activity and concentration (proteasome) and gene expression in controlling protein degradation during sepsis. My work involves examining the role of protein degradation in the regulation of meat quality, so it was interesting seeing it from a medical research groups perspective.

I then attended the joint meeting of the American dairy, meat, animal and poultry science associations. I found the conference worthwhile for meeting people I had not seen for a long time and also the wide range of papers - from traditional animal production papers through genomic techniques to the philosophy of animal ethics. It was interesting to hear about the way groups from different fields approach similar questions.

Papers presented using genomic techniques included papers on measuring changes in gene expression due to muscle stretch in cell cultures and determining the genes involved in milk production and muscle growth with common features. There are fewer genes than first thought and, therefore, genes must make more than one protein and the interaction between genes will be important. A large amount of work has been done and the information is being collected at speed, but success in this area requires patience, persistence and luck.

One paper I enjoyed looked at lamb consumption in the USA. The presenter showed that not only has US lamb consumption plateaued over the last two decades, but that it tends to occur in the middle age population bracket. They found that only 14% of those entering a supermarket planned to purchase lamb. Of these 39% were over 65 years old and 20 % left without buying lamb. An interesting point that was made that this is the only species where the product is called the same name as the baby animal.

Beverley Thomson

Hang on Beverley, what about chicken? Oops – lets not go back there! Ed

UPCOMING EVENTS

AAAP Congress in New Delhi, India. The 10th conference in this series is set to entertain and challenge you from September 22-29. The theme for the meeting is

Animal Production for food and environmental security.

Further information and registration details can be obtained from the web site for the Congress at www.aaapindia.com OR contact the President, of the AAAP, Dr P.N.Bhat and his secretariat at: Asian-Australasian Association of Animal Production Societies (AAAP), Flat No.205, No.F64-C/9, Sector 40, NOIDA 201 303. Uttar Pradesh, India. Telefax: 91-11-6883749, 91-11-84579627, email: pnbhat@bol.net.in or wbtnoida@vsnl.net.in

Primary Resources Forum Preserving New Zealand's wealth generating capacity. June 26th 2002, Palmerston North. This forum is coincident with the last day of the NZSAP conference and will debate some topics close to the heart of NZSAP like *The nature of appropriable and non-appropriable research in the primary sector* and *The role of the biological resources in driving NZ's economy*. James Buwalda from MRST will explain *The Government's role in overcoming market failure*, while the important question: *Should science be a five-year career?* will be addressed by Gowan Pickering of FRST. An as yet un-named speaker will examine *The career challenge for employers in science*. Tom Lambie from Federated Farmers will outline some of the *Challenges in production and markets* and from his experienced perspective, John Lancashire will address the topic *Achieving optimal science*. Following the lead of NZSAP, the NZIAS will run a session on *Communicating the message – in print, on radio, on TV and the internet*, followed by a workshop on messages for the media which might serve as a refresher course for some of us. For further details contact Jacqueline Rowarth jrowarth@unitec.ac.nz

NZ Institute of Primary Industry Management, the New Zealand Society of Chartered Accountants, and the New Zealand Institute of Valuers, joint conference Lincoln, 27th and 28th June 2002.

National Animal Welfare Advisory Committee (NZ) and International Society of Applied Ethology (Australasian/African Region). Joint Conference, Novotel in Hamilton, New Zealand, 27th and 28th June 2002. The theme for the meeting is:

Animal welfare and behaviour from science to solution.

There will be two keynote addresses by international authorities (including the Ron Kilgour Memorial Lecture presented by Professor Marian Stamp Dawkins, Oxford University) Call for papers: the conference will consist of eight reviews and 20-24 short free papers on new work. Provision will be made for poster sessions as required. So get your Abstract in by the deadline: 15 April 2002. Registration deadline: 1st May 2002. Further information: lindsay.matthews@agresearch.co.nz OR nawac.isae@agresearch.co.nz, NAWAC/ISAE Conference Secretary, Animal Behaviour and Welfare Research Centre, AgResearch, Private Bag 3123, Hamilton, New Zealand, Phone +64 7 838 5569, Fax +64 7 838 5038

6th Joint EAAP/ASAS Workshop on the Biology of Lactation in farm Animals, Quebec City, Quebec, Canada, 20 July 2002. For information contact Pierre Lacasse, LACASSE@EM.AGR.CA or Kerst Stelwagen, kerst.stelwagen@agresearch.co.nz

MEMBERSHIP

The New Zealand Society of Animal Production warmly welcomes the following 5 new members:

Gary Breen,	Gore	R Densley	Te Awamutu
Julie M Everett-Hincks	Massey University	Eileen L McWilliam	Masterton
Nicola M Shreurs	AgResearch, Palmerston North		

Thirty two members who have not paid subscriptions since 1998 have been deleted from the list of members of the New Zealand Society of Animal Production, as per the constitution.

A resignation was accepted from two members, leaving a current membership of 512.

**** MEMBERSHIP FEES ****

Members: The 2002 annual subscription is now due!

For full members from New Zealand and Australia the fee is NZ\$55.00 (reduced to NZ\$ 27.50 for students and retired members). Members residing overseas (except Australia) pay US\$55.00.

A personal membership fee invoice is enclosed with this newsletter on the **yellow form**.

Please return this form with your payment. Students must have the form signed by their academic supervisor.

Remember, you can use a credit card. Submit the **Name** on the card; card **Number**; card **Type** and card **Expiry Date** by either mail, fax, or E-mail to the NZSAP Executive Secretary detailing what and who the payment is for and including contact postal addresses and phone/fax numbers etc.

NOMINATIONS FOR MANAGEMENT COMMITTEE 2002-2003

Nominations for committee members are requested by April 19. The nominee, nominator and seconder must be members of the Society. The committee will be elected by postal ballot with the result announced at the Annual General Meeting except that the current Vice-President automatically becomes President, and the current President automatically becomes Immediate Past President.

The management committee of the Society consists of the following:

President	Treasurer
Vice-President	Editor of Proceedings
Immediate Past-President	Publications Manager
Secretary	Web Site Manager
Convenor of the Conference Organising Committee	Newsletter Manager

Presently the committee meets three times each year - immediately before and immediately after the annual conference, and once in December to evaluate abstracts of papers submitted for presentation at the next conference. In addition to that it holds two or three telephone conferences each year. To understand how the various officers contribute to the strategy and operations of the Society, speak to current and past committee members.

Cut here -----✂-----

Committee positions for which nominations are requested are: (Circle or highlight one)

Vice-President
Secretary
Treasurer
Editor of Proceedings
Publications Manager
Web Site Manager
Newsletter Manager
Convenor of the Conference Organising Committee

Nominations must be in the hands of the Executive Secretary by 19 April 2002.

Name of Nominee (Print) _____

Signature of Nominee _____

Proposer (Print Name) _____

Signature of Proposer _____

Secunder (Print Name) _____

Signature of Secunder _____

Date _____

MANAGEMENT COMMITTEE

The current Management Committee is:

		Phone	Fax	Email	Location
PRESIDENT	Mark Fisher	06 874 8757	06 874 8703	mark.fisher@agresearch.co.nz	AgResearch Poukawa
VICE-PRESIDENT	Catherine Morrow	07 838 5183	07 838 5628	catherine.morrow@agresearch.co.nz	AgResearch Ruakura
PAST-PRESIDENT	Graham Barrell	03 325 3803	03 325 3851	barrell@lincoln.ac.nz	Lincoln University
SECRETARY	Roland Sumner	07 838 5272	07 838 5117	roland.sumner@agresearch.co.nz	AgResearch Ruakura
TREASURER	John Smith	07 838 5533	07 838 5658	john.smith@agresearch.co.nz	AgResearch Ruakura
EDITOR	Sam Peterson	06 356 9099	06 350 5674	s.peterson@massey.ac.nz	Massey University
NEWSLETTER	David Scobie	03 983 3921	03 325 3194	scobie@agresearch.co.nz	AgResearch Lincoln
PUBLICATIONS	Gwyneth Verkerk	07 838 5694	07 838 5670	gwyneth.verkerk@dexcel.co.nz	Dexcel Hamilton
WEB SITE	Neville Jopson	03 477 6375	03 477 6376	njopson@abacusbio.co.nz	Abacus Biotech Dunedin
CONFERENCE	Annette Litherland	06 351 8204	06 351 8032	annette.litherland@agresearch.co.nz	AgResearch Grasslands
EXEC. SEC.	Lynne Smith	07 856 9150	07 856 9150	nzsap.animal@xtra.co.nz	Hamilton

An electronic version of this newsletter and other information on the Society is available at:

<http://nzsap.rsnz.govt.nz/>

Any contributions to the Newsletter should be forwarded to: David Scobie, AgResearch, PO Box 60, Lincoln.

Email: scobie@agresearch.co.nz

RETURN MAIL ADDRESS Executive Secretary
New Zealand Society of Animal Production
AgResearch, Ruakura
Private Bag 3123,
Hamilton, New Zealand

NZSAP 2002 Annual Conference Registration

24-26 June 2002

GST No. 17 722 670

(This is not a tax invoice until payment is made)

Registrations will not be confirmed by mail but receipts will be issued at the conference

Name:	Name for badge:
Address:	
	E-mail:

Conference Fee Schedule (GST inclusive)

<u>Conference Fees</u>		
Full Conference (includes lunch Mon, Tue, Wed.) or Daily rate : tick appropriate days (includes lunch) (Half-price for retired members). Mon <input type="checkbox"/> Tues <input type="checkbox"/> Wed <input type="checkbox"/>	\$130 \$60 per day	\$
Accommodation (bed & breakfast) (Tick days required and complete appropriate subtotal) Sun <input type="checkbox"/> Mon <input type="checkbox"/> Tues <input type="checkbox"/> Wed <input type="checkbox"/>	\$50 per day	\$
Meals (dinner) (Tick days required and complete appropriate subtotal) (*Mon if not annual dinner #Tues if not going to Wharerata) Sun <input type="checkbox"/> Mon* <input type="checkbox"/> Tues# <input type="checkbox"/> Wed <input type="checkbox"/>	\$12 per day	\$
Annual dinner (Monday) Presentation of New Zealand Society of Animal Production Awards	\$60	\$
Combined dinner (Tuesday) at Wharerata with NZ Institute of Agricultural Science	\$25	\$
Pre-published Proceedings for Non-members	\$55	\$
Fees enclosed Please make cheques payable to: NZSAP Conference 2002 Visa/Mastercard payments need card type, expiry date, name and number.	Total	NZ \$
Address: Andrea Death, AgResearch Grasslands, Private Bag 11008, Palmerston North. Email: nzsap@agresearch.co.nz Ph. 06-351-8102 Fax 06-351-8003		
Registrations are due by Friday 31st May 2002		